



## Successful marketing made easier!

Now you've got the power for more effective marketing, and it's easier than ever. As a Zebra Technologies PartnersFirst® member, you can access all the tools you need to develop a targeted campaign that drives results. If you can point, click, and drag, you can create customized materials that reflect your unique brand and message.

© 2010 ZIH Corp. All rights reserved. Terms & Conditions | Privacy Statement | Contact Zebra

**Make the most of your valuable time. With Zebra Technologies, PartnersFirst, and the refined Zebra Marketing Center, the power to succeed is in your own hands.**

**Get ready to utilize a new level of marketing support. Visit [www.accesszebra.com](http://www.accesszebra.com) and click on the Zebra Marketing Center icon today!**

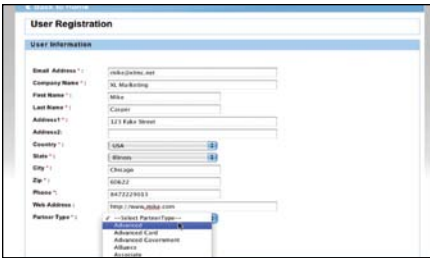
### Here's how it works:

Welcome - Please Login

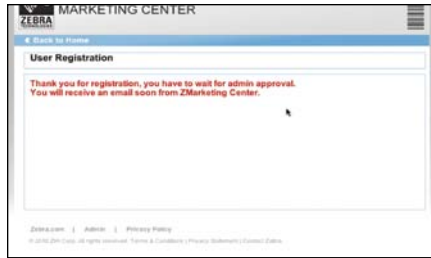
User ID:

Password:

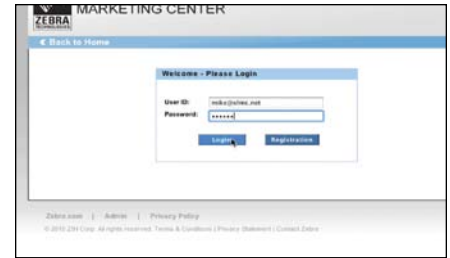
**Step 1:** Login to the Zebra Marketing Center with your User ID and Password.



**Step 2:** Enter your contact information.



**Step 3:** You will receive a confirmation that your registration has been received. Check your e-mail for your login information.



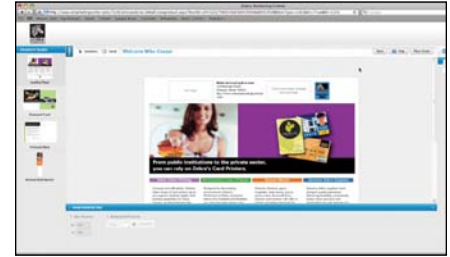
**Step 4:** Return to the Zebra Marketing Center's homepage and enter your new login information.



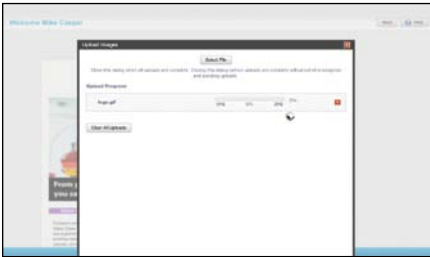
**Step 5:** Browse the available campaigns from the options provided (Products, Alliances, Vertical Markets).



**Step 6:** Select the campaign you want. You'll see a list of the materials included in the campaign. Press "Next."



**Step 7:** The site builder takes you to the first piece so you can begin customizing it.



**Step 8:** Click on "Upload Image." Locate your logo on your computer, select it, and click "Upload." Your logo will now be in your "Images" tab.



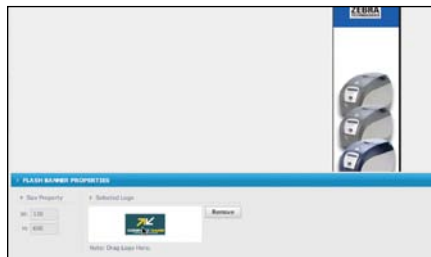
**Step 9:** Click and drag your logo to the "VAR Logo" box on the screen. The site builder automatically adds your address (the one you entered when you registered). You can resize your logo here and change the font, size, and color.



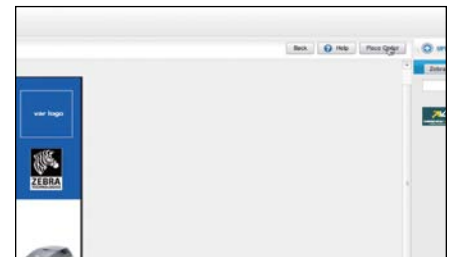
**Step 10:** Enter the telephone number and/or e-mail address for inquiries.



**Step 11:** Repeat Step 9 (drag your logo) on the second item in your campaign.



**Step 12:** Repeat Step 9 (drag your logo) on the third item in your campaign.



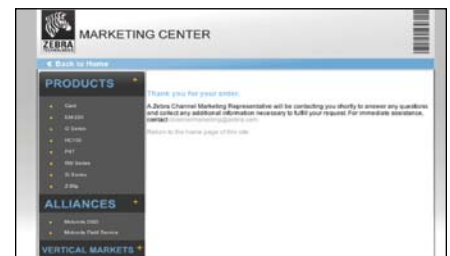
**Step 13:** Click "Place Order."



**Step 14:** Review the details on your order form and enter any missing information.



**Step 15:** Preview pdf's of the materials you are ordering to ensure everything is correct. If you have a mailing list for this campaign, upload it here.



**Step 16:** When everything is correct, click "Place Order." You will receive a confirmation. If any further information is required, a Zebra Channel Marketing Representative will contact you.